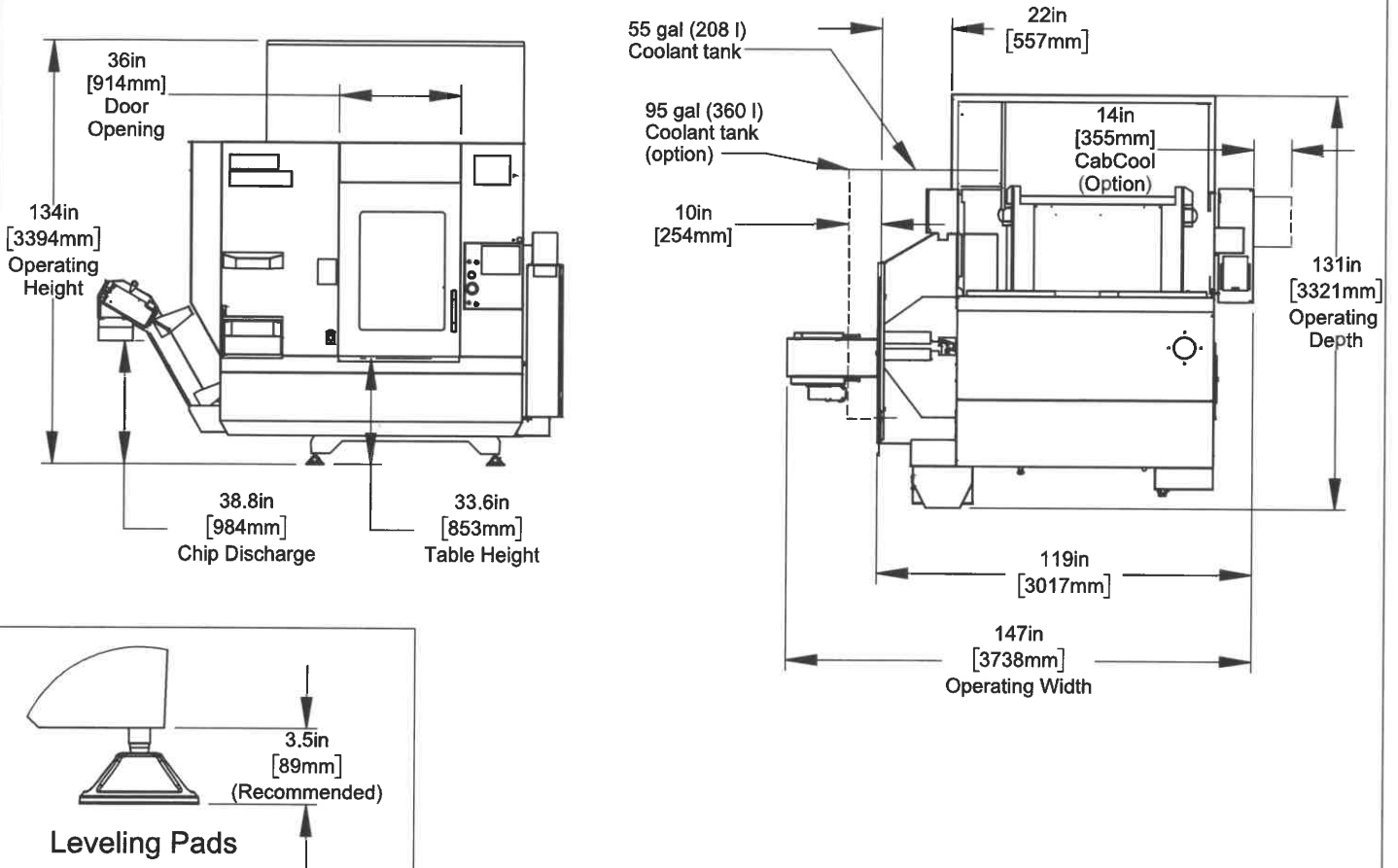
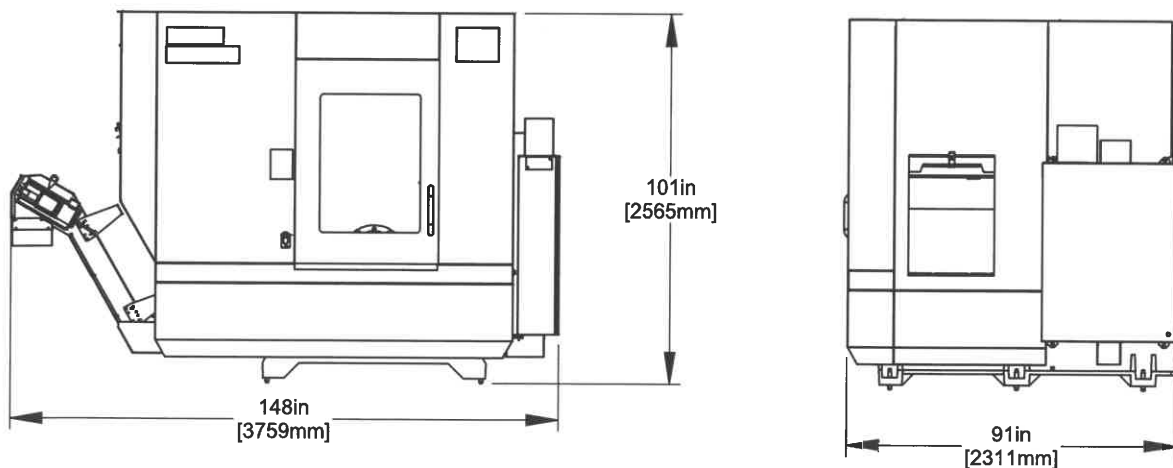


Operating Dimensions



As Shipped Dimensions



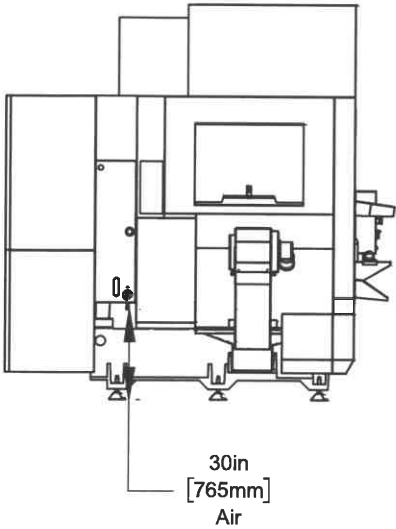
For lifting instructions refer to lifting sticker on machine, service document ES0246, or contact your local HFO

All dimensions based on stackup of sheetmetal, subject to variation of 1/2" (13 mm)

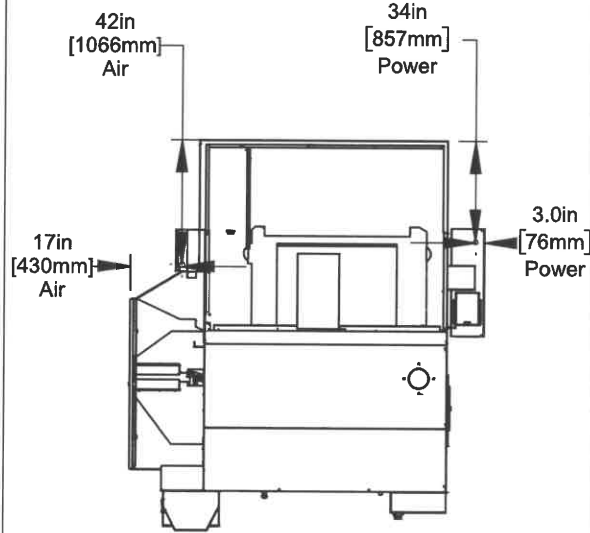
*Due to continual product improvements, machine dimensions are subject to change without notice.

Air & Power

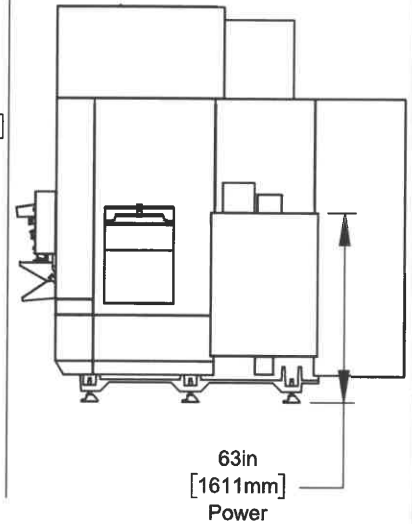
Left View
Air Connection



Top View



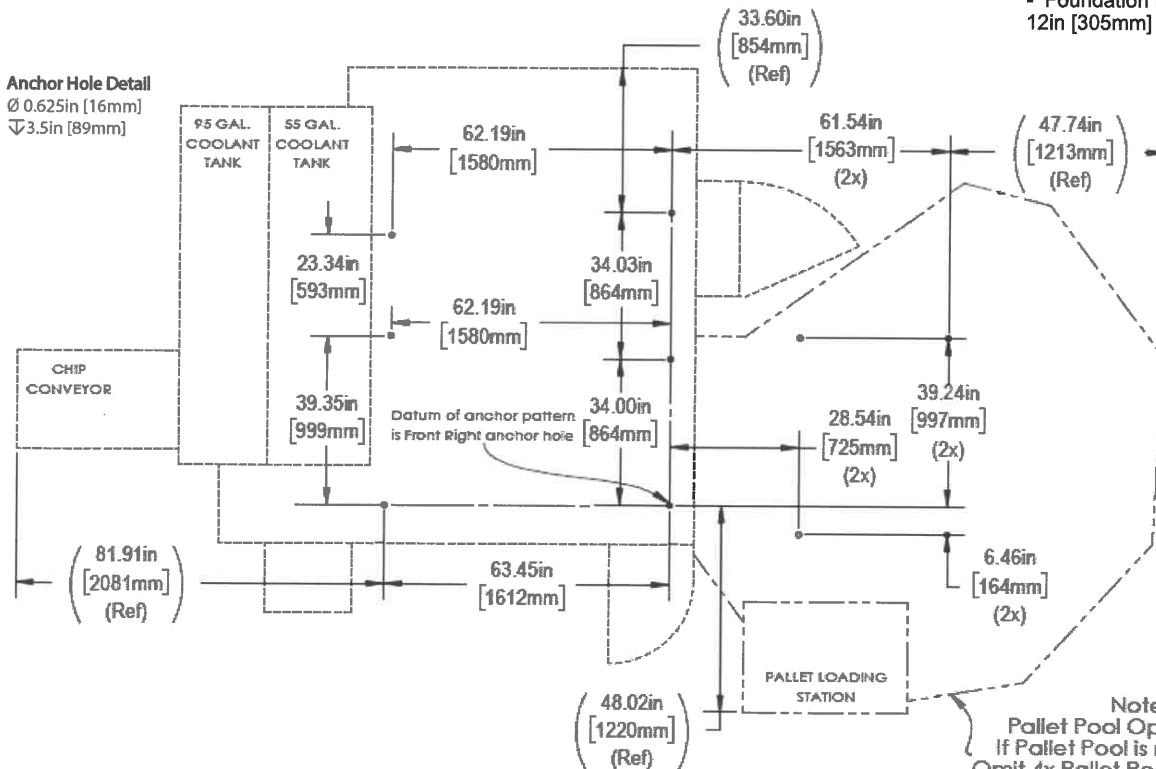
Right View
Power Connection



All dimensions based on stackup of sheetmetal, subject to variation of 1/2" (13 mm)
UMC-1000 Pallet Pool utilities connection locations remain the same as the base machine

Anchor Pattern

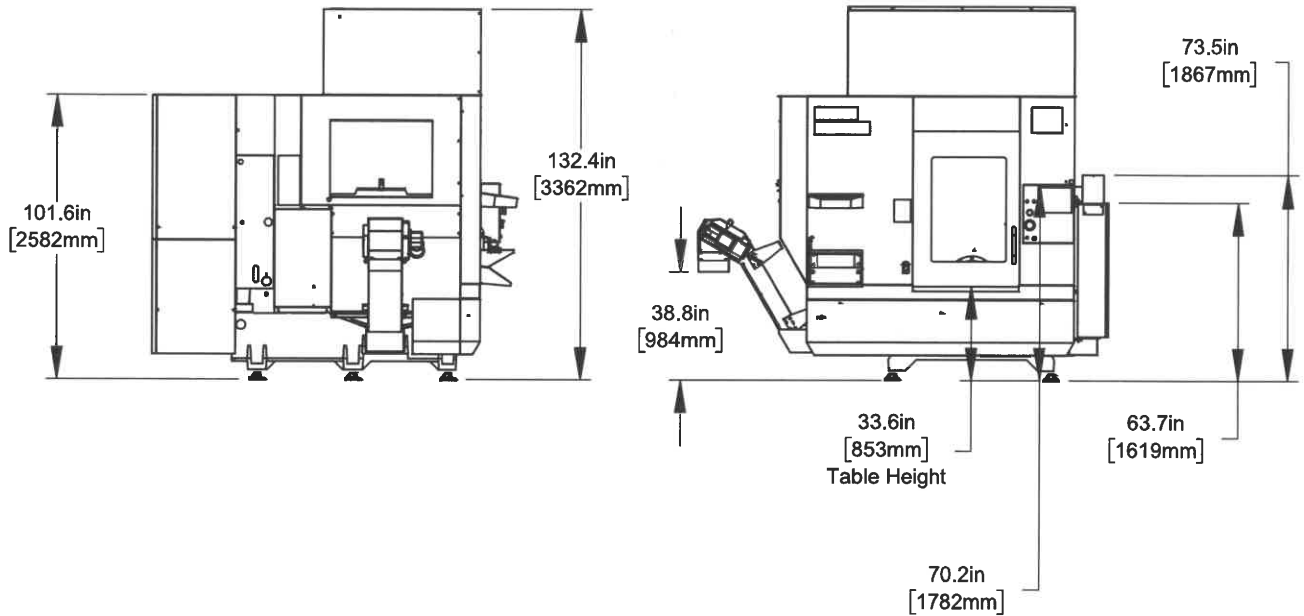
Note:
- Foundation must extend at least 12in [305mm] from bored holes.



Note -
Pallet Pool Option Shown.
If Pallet Pool is not installed,
Omit 4x Pallet Pool anchor holes

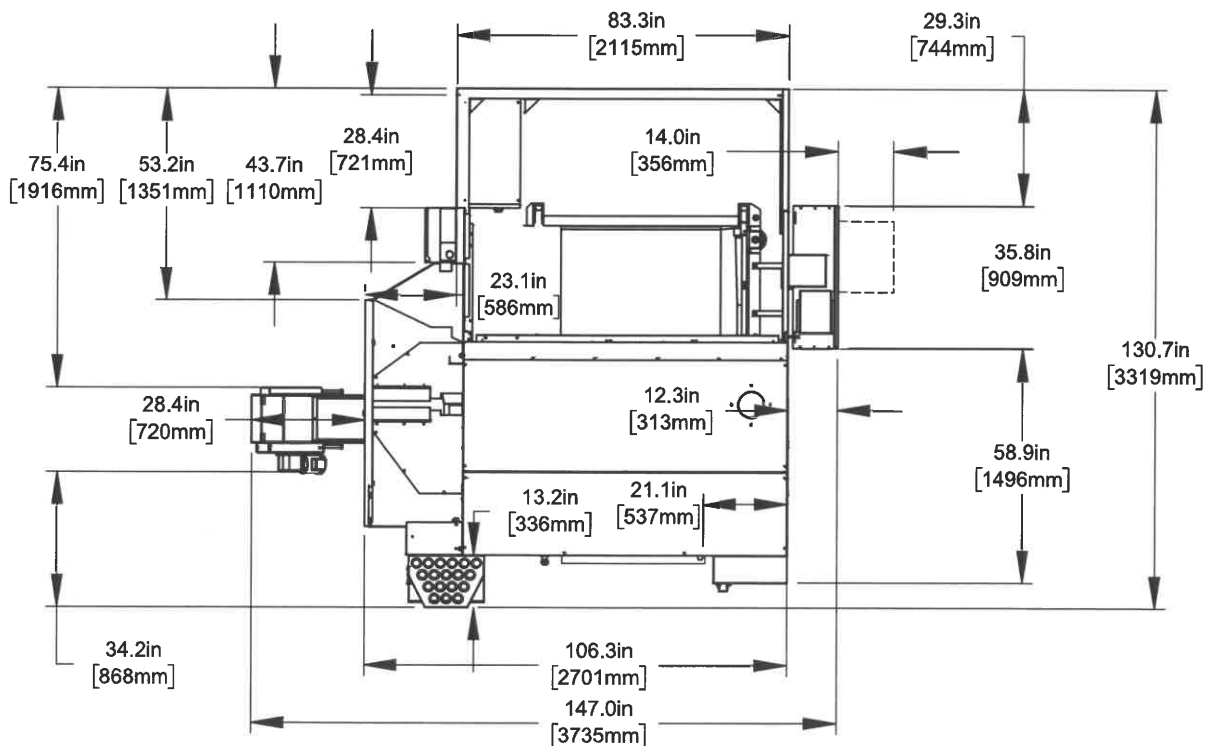
*Due to continual product improvements, machine dimensions are subject to change without notice.

Height Breakdown



All dimensions based on stackup of sheetmetal, subject to variation of 1/2" (13 mm)

Width Breakdown

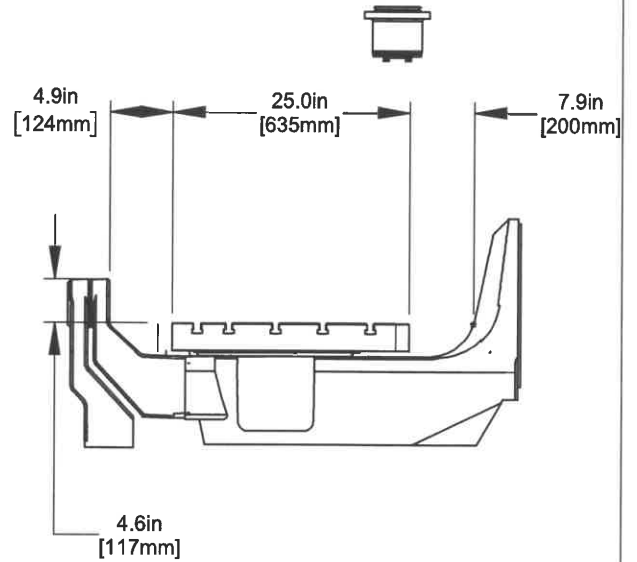
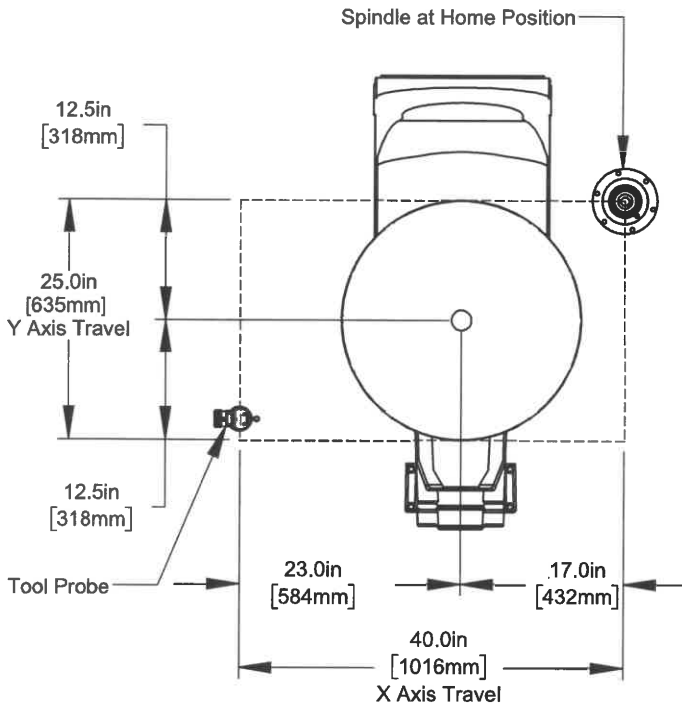


All dimensions based on stackup of sheetmetal, subject to variation of 1/2" (13 mm)

*Due to continual product improvements, machine dimensions are subject to change without notice.

Max Travels		
X	40 in	1016mm
Y	25 in	635mm
Z	25 in	635mm
A	-35° to +120°	
C	360°	

X&Y-Axis Clearance



Z-Axis Clearance*

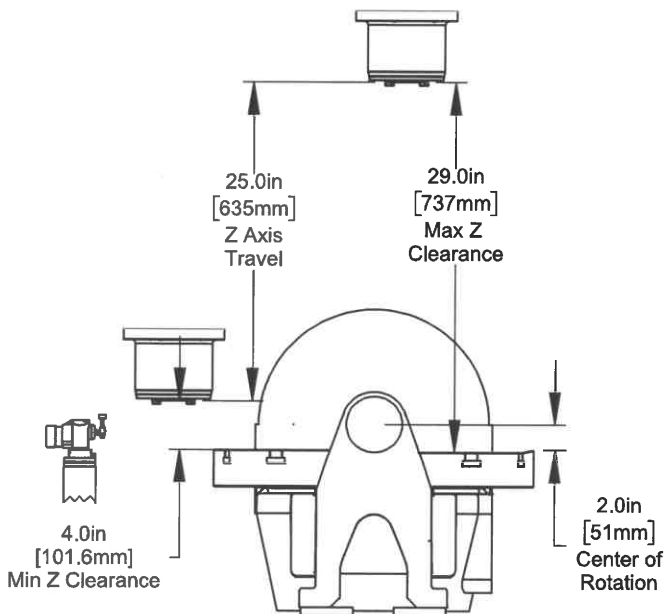
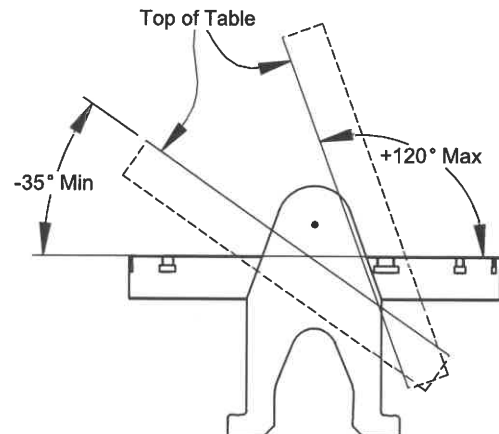


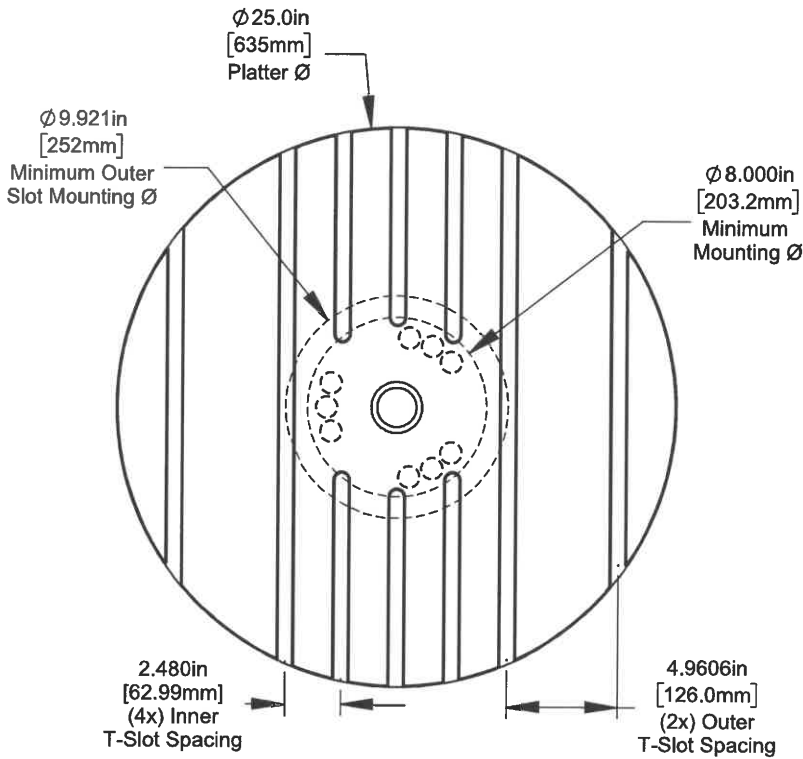
Table Rotation



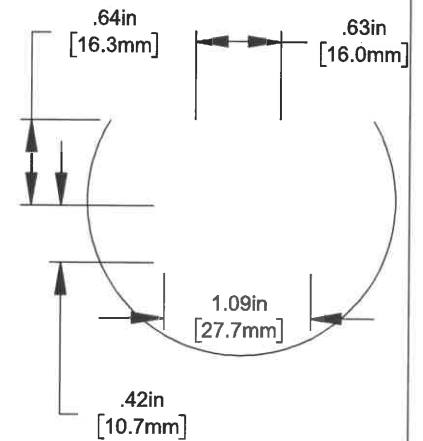
*Pallet Pool option changes Z clearance.
See PP specific clearance diagram if applicable

*Due to continual product improvements, machine dimensions are subject to change without notice.

Table

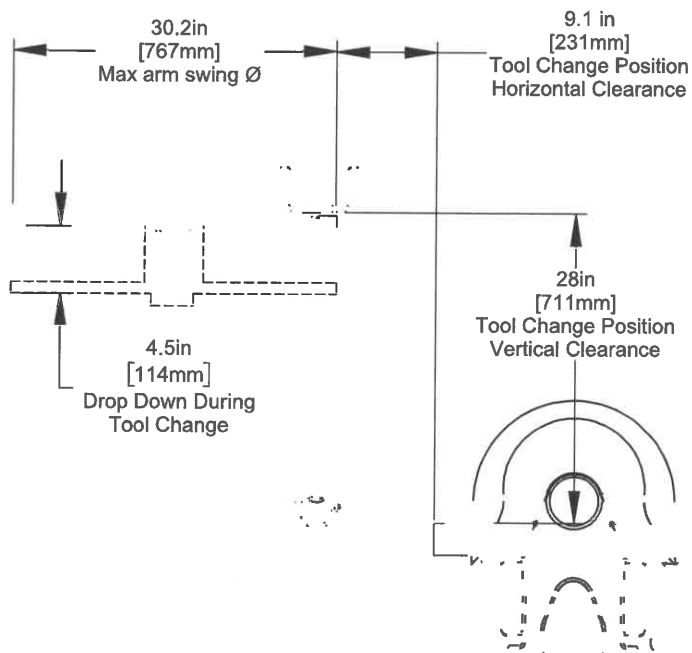


T Slot Detail

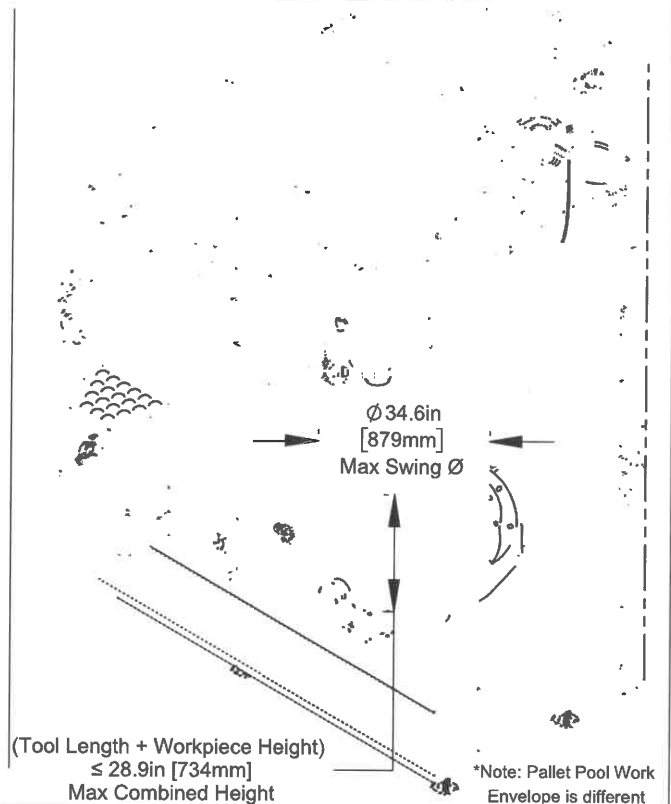


(9x) Phantom holes are not available to use for part fixturing

Tool Changer



Work Envelope*



*Due to continual product improvements, machine dimensions are subject to change without notice.